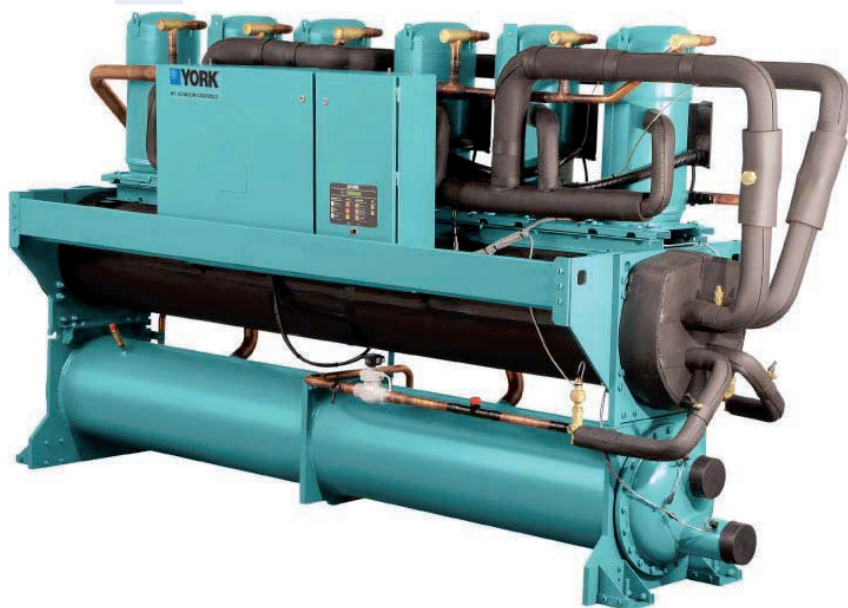


# YCWL / YCRL

## Water-cooled or remote air-cooled scroll compressor chiller

Cooling capacities from 178 kW to 595 kW

Available configurations that meet A Class energy efficiency levels at Eurovent Standard Conditions.



### Features

The **YCWL** series was designed to produce the greatest cooling capacity with the lowest sound levels. The use of scroll compressors and shell + tube heat exchangers, provides optimum efficiency at part load, up to an ESEER of 7.25. Its dimensions have been optimized to pass through a doorway 2 m high by 90 cm wide.

The **YCWL** is designed for all air conditioning applications and medium temperature process cooling. It is equipped with two independent cooling circuits and regulated by a micro-processor that optimizes chiller performance.

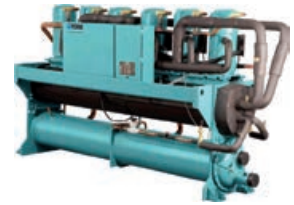
The **YCWL** is designed for indoor installation and each **YCWL** is fully tested before leaving our factories.

### Options

- Leaving Chilled Liquid from -12 to +15°C
- Leaving Condenser Liquid from +18 to +50°C
- Compressor acoustic blankets
- Flow switch or pressure differential switch
- Soft starters
- Neoprene pads or spring isolators
- Dual relief valves kit
- Electronic regulators
- Vibration isolators

# Water-cooled or remote air-cooled scroll compressor chiller

YCWL / YCRL 0201 to 0611



## Nominal capacity

YCWL-SE	0292	0343	0396
Cooling capacity (kW) <sup>1</sup>	294	333	370
EER <sup>1</sup>	4.71	4.66	4.71
SEER	5.92	5.90	6
ηs, c	229	228	232
Sound Pressure (dB(A)) <sup>2</sup>	72	74	76

YCWL-HE	0201	0231	0261	0302	0347	0426	0447	0532	0611
Cooling capacity (kW) <sup>1</sup>	191	219	244	308	353	411	444	498	595
EER <sup>1</sup>	4.94	5.07	5.02	4.96	5	5.07	5.02	5.03	4.92
SEER	5.52	5.91	6.48	6.22	6.06	6.25	5.97	6.18	5.88
ηs, c	213	228	251	241	234	242	231	239	227
Sound Pressure (dB(A)) <sup>2</sup>	68	70	72	72	74	76	74	71	72

YCRL-HE	0201	0231	0261	0302	0347	0386	0447	0532	0611
Cooling capacity (kW) <sup>3</sup>	178	207	233	273	325	356	415	485	556
EER <sup>3</sup>	4.00	4.00	4.12	4.20	4.16	4.11	4.17	4.06	3.99
Sound Pressure (dB(A)) <sup>2</sup>	64	65	67	67	70	68	69	71	73

1: Cooling capacity and efficiencies @ Eurovent conditions evaporator entering/leaving temperature 12C/7C condenser entering/leaving temperature 30/35C EN14511:2011.

2: EN 292-1991 Sound pressure is measured 1 meter away from the control panel and 1.5 meters above the floor.

3: Cooling capacity and efficiencies @ Eurovent conditions evaporator entering/leaving temperature 12C/7C saturated discharge temperature 45C EN14511:2007.

The above data is based on Johnson Control's selection software YORKworks 18.06. Please refer to the latest version of the software for specific projects.

## Technical data

YCWL-SE			0292	0343	0396
Dimensions	Length	mm	3161	3169	3159
	Width	mm	859		
	Height	mm	1830	1819	
Operating weight		kg	2481	2494	2716

YCWL-HE			0201	0231	0261	0302	0347	0426	0447	0532	0611
Dimensions	Length	mm	3161	3098	3154	3169	3132	3133	3643		
	Width	mm	859	857	844	859		859	885		
	Height	mm	1670	1914	1820	1819	1889	1889	1946	1965	
Operating weight		kg	2218	2512	2463	2481	2808	2824	3632	3838	3999

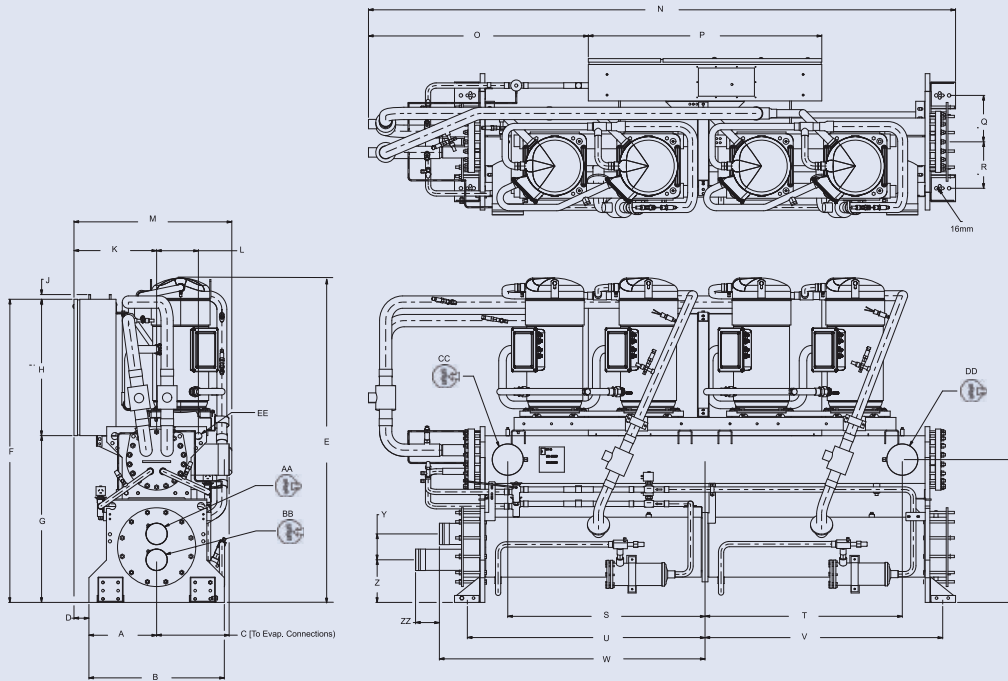
YCRL-HE			0201	0231	0261	0302	0347	0386	0447	0532	0611
Dimensions	Length	mm	3086	3061	3076		3061	3617	3576		
	Width	mm	826	856	843		856	965			902
	Height	mm	1438	1481	1471	1593	1683	1641	1638	1641	
Operating weight		kg	1309	1481	1471	1593	1682	1947	2266	2264	2263



Manufacturer reserves the rights to change specifications without prior notice.

# Dimensions and hydraulic connections

YCWL0292SE, YCWL0343SE, YCWL0396SE, YCWL0201HE, YCWL0231HE, YCWL0261HE, YCWL0302HE, YCWL0347HE, YCWL0426HE, YCWL0447HE



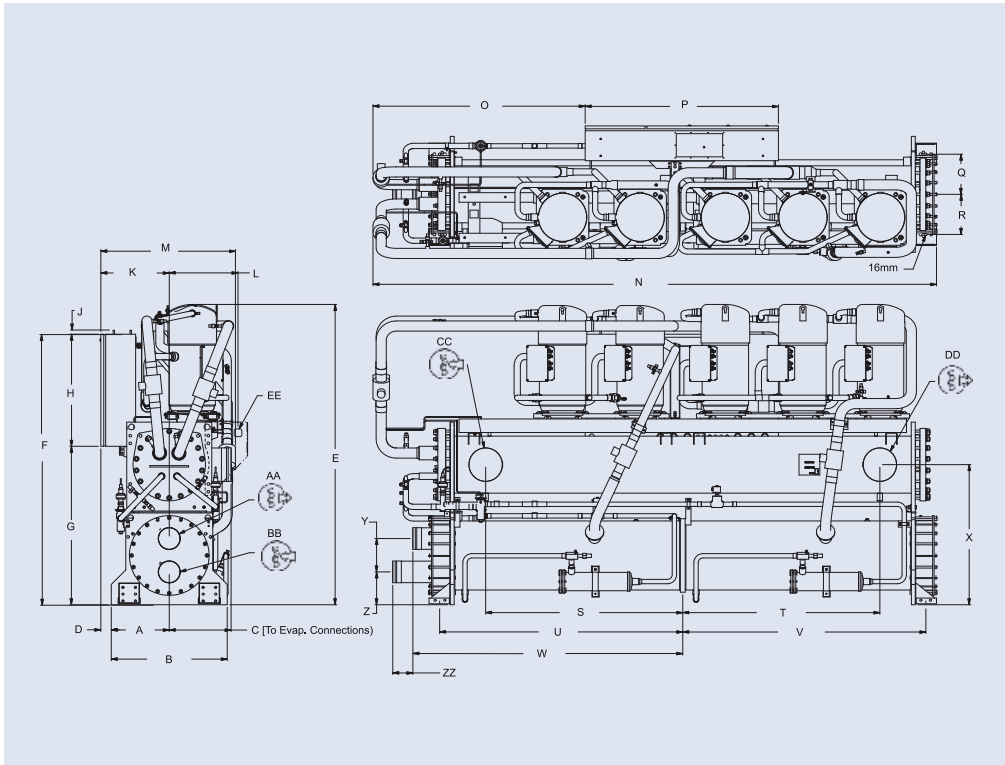
YCWL	0292SE	0343SE	0396SE	0201HE	0231HE	0261HE	0302HE	0347HE	0426HE	0447HE
<b>Dimension</b>	mm	mm	mm	mm	mm	mm	mm	mm	mm	mm
<b>A</b>	368	368	368	368	368	368	368	368	368	381
<b>B</b>	737	737	737	737	737	737	737	737	737	762
<b>C</b>	299	394	394	299	407	394	394	406	406	406
<b>D</b>	81	81	81	81	81	81	81	81	81	69
<b>E</b>	1830	1819	1819	1670	1914	1820	1819	1889	1889	1946
<b>F</b>	1638	1714	1714	1638	1753	1714	1714	1753	1753	1778
<b>G</b>	901	977	978	901	1016	977	977	1016	1016	1041
<b>H</b>	737	737	737	737	737	737	737	737	737	737
<b>J</b>	25	25	25	25	25	25	25	25	25	25
<b>K</b>	450	450	450	311	450	450	450	450	450	450
<b>L</b>	311	311	311	311	324	311	311	324	324	452
<b>M</b>	859	859	859	859	857	844	859	859	859	885
<b>N</b>	3161	3169	3159	3161	3098	3154	3169	3132	3133	3643
<b>O</b>	1163	1171	1155	1163	1100	1156	1171	1134	1133	1334
<b>P</b>	1270	1270	1270	1270	1270	1270	1270	1270	1270	1270
<b>Q</b>	251	251	251	251	251	251	251	251	251	264
<b>R</b>	251	251	251	251	251	251	251	251	251	264
<b>S</b>	1080	1080	1080	1080	1054	1080	1080	1054	1054	1295
<b>T</b>	1080	1080	1080	1080	1054	1080	1080	1054	1054	1295
<b>U</b>	1293	1293	1293	1293	1293	1293	1293	1293	1293	1598
<b>V</b>	1293	1293	1293	1293	1293	1293	1293	1293	1293	1598
<b>W</b>	1445	1445	1455	1445	1445	1445	1445	1455	1455	1774
<b>X</b>	813	813	813	813	845	813	813	845	845	921
<b>Y</b>	181	181	207	181	181	181	181	207	207	219
<b>Z</b>	210	210	197	210	210	210	210	197	197	216
<b>ZZ</b>	130	130	133	130	130	130	130	133	133	132
<b>EE Ø</b>	38	38	38	38	38	38	38	38	38	51

All dimensions in mm. Drawings not a scale.

YCWL	0292SE	0343SE	0396SE	0201HE	0231HE	0261HE	0302HE	0347HE	0426HE	0447HE
<b>Water Connections</b>	in	in	in	in	in	in	in	in	in	in
<b>AA Ø</b>	4	4	5	4	4	4	4	5	5	5
<b>BB Ø</b>	4	4	5	4	4	4	4	5	5	5
<b>CC Ø</b>	6	6	6	6	8	6	6	8	8	8
<b>DD Ø</b>	6	6	6	6	8	6	6	8	8	8

# Dimensions and hydraulic connections

## YCWL0532HE

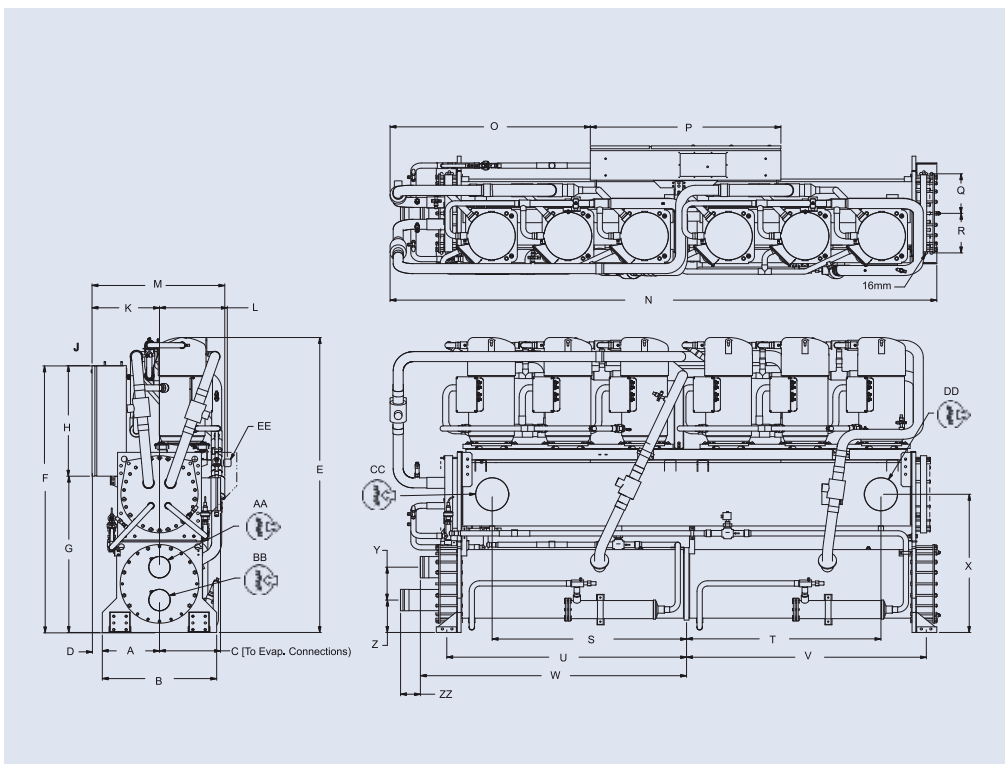


YCWL	0532HE
Dimension	mm
A	381
B	762
C	406
D	69
E	1965
F	1778
G	1041
H	737
J	25
K	450
L	452
M	885
N	3643
O	1334
P	1270
Q	263
R	263
S	1295
T	1295
U	1598
V	1598
W	1774
X	921
Y	219
Z	216
ZZ	132
EE Ø	51

All dimensions in mm.

YCWL	0532HE
Water Connections	in
AA Ø	5
BB Ø	5
CC Ø	8
DD Ø	8

## YCWL0611HE



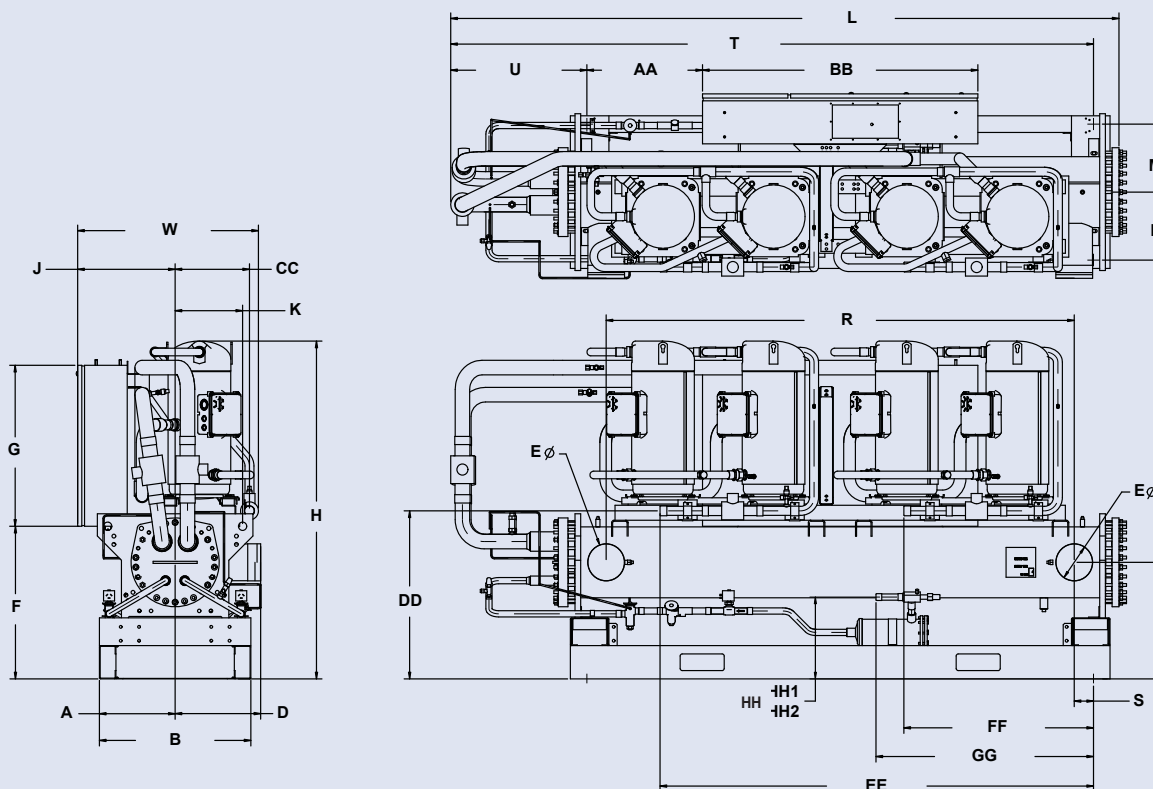
YCWL	0611HE
Dimension	mm
A	381
B	762
C	406
D	69
E	1965
F	1778
G	1041
H	737
J	25
K	450
L	452
M	885
N	3643
O	1334
P	1270
Q	264
R	264
S	1295
T	1295
U	1598
V	1598
W	1774
X	921
Y	219
Z	216
ZZ	132
EE Ø	51

All dimensions in mm.

YCWL	0611HE
Water Connections	in
AA Ø	5
BB Ø	5
CC Ø	8
DD Ø	8

# Dimensions and hydraulic connections

YCRL 0201 HE to YCRL 0347 HE



YCRL	0201 HE	0231 HE	0261 HE	0302 HE	0347 HE
W	824	834	834	834	846
H	1437	1616	1546	1544	1613
L	3085	3062	3082	3082	3062
A	349	349	349	349	349
B	699	692	699	699	699
D	299	407	394	394	407
E	219	219	168	168	219
F	622	737	699	699	737
G	737	737	737	737	737
J	450	450	450	450	450
K	311	324	311	311	324
M	311	311	311	311	311
N	311	311	311	311	311
R	2159	2108	2159	2159	2108
S	89	114	89	89	114
T	2965	2938	2965	2965	2938
U	628	601	628	628	601
X	533	565	533	533	565
AA	533	533	533	533	533
BB	1270	1270	1270	1270	1270
CC	343	343	343	343	356
DD	780	838	769	769	838
EE	2059	2085	1999	1999	2008
FF	947	886	875	875	883
GG	1003	1003	1003	965	1040
HH	466	375	375	375	378

All dimensions in mm. Drawings not a scale.

