

YORK® AIR-CONDITIONING PRODUCTS

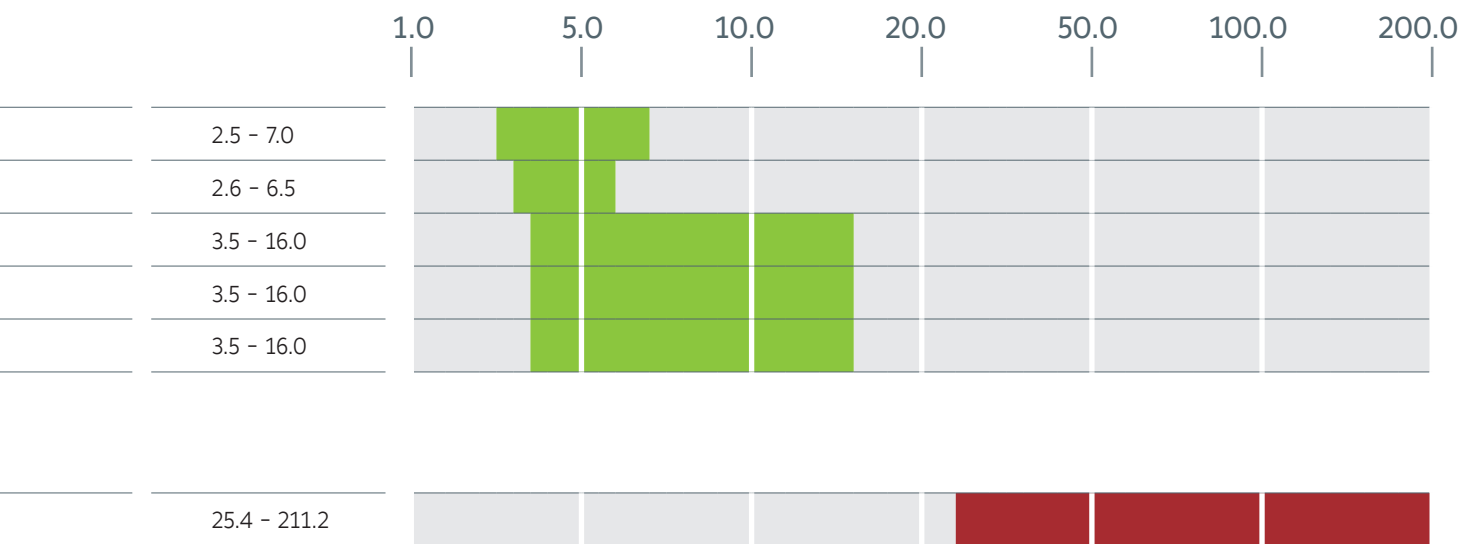
Residential & VRF News 2015



Catalogue Content

		Pag.
Split Systems		
High wall High Efficiency Inverter	YWHJZH 09 to 24 K	6
High wall Inverter	YEHJZH 09 to 24 K	8
Floor/Ceiling Inverter	YGFJZH 12 to 60	10
Cassette Inverter	YGKJZH 12 to 60	12
Blower Inverter	YGEJZH 12 to 60	14
VRF Systems		
VRF System High Efficiency	YV2VYH 025 to 204	18

Cooling capacity kW





Minisplit Systems

HIGH WALL INVERTER
FLOOR/CEILING INVERTER
CASSETTE INVERTER
BLOWER INVERTER

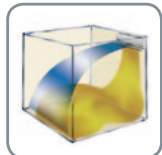
High Wall High Efficiency Inverter

YWHJZH 09 to 24 K

A complete range from 2.5 kW to 7.0 kW



UPDATED
VERSION



Features

- DC Inverter compressor
- Low noise levels
- Ultra high SEER & SCOP, class A++ or more
- Multi louvers design for faster heating
- Quiet design with low noise
- 8°C heating
- 3 sleep modes/curves
- Intelligent defrosting
- Automatic clean and restart
- Self diagnosis
- LED display
- Overlong distance air flow
- 7 fan speeds with turbo cooling
- 3D-airflow with auto horizontal airflow (Left/Right)
- Low Ambient Kit
- Heater cable
- Service valve protection cover
- **Blue fin protection (indoor and outdoor units)**



Remote controller

- Wireless
- I FEEL function
- 5 operation modes (Cool/Heat/Auto/Dry/Fan)
- 5 Fan speeds selection
- Quiet/sleep button
- ON/OFF timer
- Air flow direction setting
- LCD display
- Turbo mode
- Room temperature setting
- Lock Button Function
- Wired control as option



High Wall High Efficiency Inverter

YWHJZH 09 to 24 K



Technical features

Set reference			YWHJZH_BAR_AKX				
Indoor unit		Sizes	YWHJXH009BAR1-FX	YWHJXH009BAR2-FX	YWHJXH012BAR1-FX	YWHJXH018BAR1-FX	YWHJXH024BAR1-FX
Outdoor unit		Sizes	YWHJYH009BAR1AKX	YWHJYH009BAR2AKX	YWHJYH012BAR1AKX	YWHJYH018BAR1AKX	YWHJYH024BAR1AKX
Cooling capacity		kW	2.5 (0.6 - 3.2)	2.6 (0.6 - 3.2)	3.5 (0.6 - 4.0)	5.3 (1.0 - 6.3)	7.0 (2.0 - 8.6)
Heating capacity		kW	3.2 (0.6 - 4.0)	3.0 (0.6 - 4.0)	4.0 (0.6 - 5.0)	5.4 (1.0 - 6.8)	7.3 (1.9 - 9.0)
Compressor		Type	Rotary				
Refrigerant			R410A				
Power supply		V/Ph/Hz	230 / 1 / 50 + E				
Power input	cooling	kW	0.60	0.60	0.90	1.51	2.00
	heating	kW	0.80	0.65	1.00	1.45	1.96
EER			4.17	4.33	3.89	3.50	3.50
SEER			7.60	8.50	8.00	6.40	6.30
COP			4.00	4.62	4.00	3.72	3.72
SCOP			4.70	5.10	4.70	4.00	4.00
Energy Class	cooling		A++	A+++	A++	A++	A++
	heating		A++	A+++	A++	A+	A+
Indoor airflow		m ³ /h	550	650	750	950	1 200
Sound pressure at 1 m	Indoor (L/M/H)	dB(A)	26 / 29 / 36	26 / 30 / 36	26 / 30 / 36	34 / 38 / 44	37 / 42 / 50
	Outdoor	dB(A)	50	54	54	56	58
Dimensions	Indoor	H (mm)	292	292	292	319	326
		W (mm)	816	866	866	1 018	1 178
		D (mm)	209	209	209	230	264
	Outdoor	H (mm)	540	596	596	700	790
		W (mm)	848	899	899	955	980
		D (mm)	320	378	378	396	427
Net weight	Indoor unit	kg	10.5	11	11	14	17
	Outdoor unit	kg	35	41	43	47.5	65
Piping		Type of connection	Flare				
Diameter	Gas		3/8"	3/8"	1/2"	5/8"	5/8"
	Liquid		1/4"	1/4"	1/4"	1/4"	1/4"
Refrigerant charge		g	1 220	1 200	1 300	1 600	2 300
Pipe run	Length	m	15	15	20	25	25
	Height	m	10	10	10	10	10
Operating limit - cooling mode		min./max.	-15°C / +48°C			-15°C / +43°C	
Operating limit - heating mode		min./max.	-20°C / +24°C				

Nominal cooling capacity based on : - Indoor Air Temp. 27°C DB / 19°C WB - Outdoor Air Temp. 35°C DB

Nominal heating capacity based on : - Indoor Air Temp. 21°C DB - Outdoor Air Temp. 7°C DB/6°C WB

Piping length : 5 m with initial charge

Accessories

Sizes	09	09	12	18	24
Electrostatic dedusting filter			Optional		
Silver ion filter			Optional		
Active carbon filter			Optional		
Wired control			Optional		



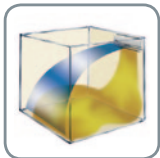
High Wall Inverter

YEJZH 09 to 24 K

A complete range from 2.6 kW to 6.5 kW



UPDATED
VERSION



Features

- High SEER & SCOP, Class A++
- DC Inverter compressor
- Low noise levels
- Dry mould proof
- Automatic restart
- Automatic air sweep
- Intelligent defrosting
- 8°C heating
- Self diagnosis
- Low Ambient Kit
- Service valve protection cover
- Rustproof casing
- **Blue fin protection (indoor and outdoor units)**



Remote controller

- Wireless
- 5 operation modes (Cool/Heat/Auto/Dry/Fan)
- Sleep mode
- Room temperature setting
- Fan speed selection
- Timer setting function
- ON/OFF timer
- I FEEL function
- Air flow direction setting
- LCD display
- Turbo mode
- Lock button function



High Wall Inverter

YEHJZH 09 to 24 K



Technical features

Set reference			YEHJZH_BAM1AKX			
Indoor unit		Sizes	YEHJXH009BAM1-FX	YEHJXH012BAM1-FX	YEHJXH018BAM1-FX	YEHJXH024BAM1-FX
Outdoor unit		Sizes	YEHJYH009BAM1AKX	YEHJYH012BAM1AKX	YEHJYH018BAM1AKX	YEHJYH024BAM1AKX
Cooling capacity		kW	2.6 (0.6 - 3.2)	3.5 (0.6 - 3.9)	5.3 (1.3 - 6.6)	6.5 (2.5 - 6.8)
Heating capacity		kW	3.0 (0.8 - 3.6)	4.0 (0.9 - 4.4)	5.8 (1.1 - 6.8)	7.0 (2.5 - 7.6)
Compressor		Type	Rotary			
Refrigerant			R410A			
Power supply		V/Ph/Hz	230 / 1 / 50 + E			
Power input	cooling	kW	0.87	1.17	1.62	2.18
	heating	kW	0.90	1.20	1.76	2.22
EER			2.99	2.99	3.25	2.96
SEER			6.10	6.10	6.10	6.00
COP			3.33	3.33	3.30	3.15
SCOP			4.00	4.00	4.00	4.00
Energy Class	cooling		A++	A++	A++	A+
	heating		A+	A+	A+	A+
Indoor airflow (high speed)		m ³ /h	500	500	780	800
Sound pressure at 1 m	Indoor (L/M/H)	dB(A)	28 / 34 / 39	30 / 35 / 40	33 / 37 / 43	39 / 42 / 47
	Outdoor	dB(A)	51	53	56	58
Dimensions	Indoor	H (mm)	275	275	298	315
		W (mm)	845	845	940	1 007
		D (mm)	180	180	200	219
	Outdoor	H (mm)	540	540	700	790
		W (mm)	776	776	955	980
		D (mm)	320	320	396	427
Net weight	Indoor unit	kg	9	9	12	15
	Outdoor unit	kg	28	29	45	55
Piping		Type of connection	Flare			
Diameter	Gas		3/8"	3/8"	1/2"	5/8"
	Liquid		1/4"	1/4"	1/4"	1/4"
Refrigerant charge		g	700	850	1 350	1 800
Pipe run	Length	m	15	15	25	25
	Height	m	10	10	10	10
Operating limit - cooling mode		min./max.	-15°C / +48°C			
Operating limit - heating mode		min./max.	-20°C / +24°C			

Nominal cooling capacity based on : - Indoor Air Temp. 27°C DB / 19°C WB - Outdoor Air Temp. 35°C DB

Nominal heating capacity based on : - Indoor Air Temp. 21°C DB - Outdoor Air Temp. 7°C DB/6°C WB

Piping length : 5 m with initial charge

Accessories

Sizes	09	12	18	24
Electrostatic dedusting filter			Optional	
Silver ion filter			Optional	
Cold Plasma filter			Optional	
Active carbon filter			Optional	

Floor/Ceiling Inverter

YGFJZH 12 to 60

A complete range from 3.5 kW to 16.0 kW



Features

- High SEER & SCOP, Class A++ mainly
- Inverter DC compressor and fan motor
- Washable filter
- Convertible - floor or ceiling
- Automatic restart
- Automatic air sweep
- Horizontal and vertical air sweep function
- Different swing angle design for cooling and heating
- 3D airflow
- Low Ambient Kit
- Intelligent defrosting
- Service valve protection cover
- Rustproof casing
- Self diagnosis
- **Blue fin protection (indoor and outdoor units)**



Remote controller

- Wireless
- 5 operation modes (Cool/Heat/Auto/Dry/Fan)
- Sleep mode
- Room temperature setting
- Fan speed selection
- Timer setting function
- Air flow direction setting
- LCD display
- Turbo mode
- Lock button function



Floor/Ceiling Inverter

YGFJZH 12 to 60



Technical features

Set reference		YGFJZH								
Indoor unit	Sizes	YGFJXH 12	YGFJXH 18	YGFJXH 24	YGFJXH 30	YGFJXH 36	YGFJXH 42	YGFJXH 48	YGFJXH 60	
Outdoor unit	Sizes	YGUJYH 12	YGUJYH 18	YGUJYH 24	YGUJYH 30	YGUJYH 36	YGUJYH 42	YGUJYH 48	YGUJYH 60	
Cooling capacity	kW	3.5 (0.9~3.9)	5.0 (1.6~5.8)	7.0 (2.4~8.2)	8.5 (2.6~9.2)	10.0 (3.2~11.5)	11.5 (3.6~12.5)	14.0 (6.0~14.8)	16.0 (6.4~16.5)	
Heating capacity	kW	3.8 (0.9~4.1)	5.6 (1.4~6.8)	8.0 (2.4~9.0)	9.2 (2.4~9.9)	12.0 (2.9~14.5)	13.5 (3.9~15.5)	16.0 (5.2~18.0)	17.0 (5.5~20.0)	
Compressor	Type	Rotary								
Refrigerant		R410A								
Power supply	V/Ph/Hz	230 / 1 / 50				230/1/50 or 400/3/50			400 / 3 / 50	
Power input	cooling	kW	1.09	1.55	2.18	2.67	3.20	3.90	4.80	5.75
	heating	kW	1.05	1.55	2.21	2.57	3.40	3.70	4.30	4.70
EER			3.21	3.23	3.21	3.18	3.12	2.95	2.92	2.78
SEER			6.1	6.1	5.6	6.1	6.1	6.1	5.6	5.1
COP			3.61	3.61	3.62	3.58	3.53	3.65	3.72	3.62
SCOP			4.0	4.0	4.0	4.0	4.0	4.0	3.8	4.0
Energy Class	cooling		A++	A++	A+	A++	A++	A++	A+	A
	heating		A+	A+	A+	A+	A+	A+	A	A+
Indoor airflow (High speed)	m ³ /h		700	1 000	1 200	1 500	1 900	1 900	2 300	2 500
Sound pressure at 1 m	Indoor (H/M/L)	dB(A)	33 / 30 / 27	42 / 38 / 32	48 / 46 / 40	46 / 44 / 38	53 / 51 / 46	54 / 52 / 47	55 / 50 / 46	56 / 52 / 46
	Outdoor	dB(A)	52	56	57	58	63	61	59	63
Dimensions	Indoor	H (mm)	700	700	700	700	700	700	700	700
		W (mm)	1 220	1 220	1 220	1 420	1 420	1 420	1 700	1 700
	Outdoor	D (mm)	225	225	225	245	245	245	245	245
		H (mm)	540	700	790	790	1 100	1 349	1 349	1 365
		W (mm)	848	955	980	980	1 107	958	958	1 085
		D (mm)	320	396	427	427	440	412	412	427
Net weight	Indoor unit	kg	39	39	40	48	48	50	59	59
	Outdoor unit	kg	34	47	67	71	92	95	105	126
Piping	Type of connection		Flare							
	Diameter	Gas	3/8"	1/2"	5/8"	5/8"	5/8"	5/8"	5/8"	3/4"
	Liquid	1/4"	1/4"	3/8"	3/8"	3/8"	3/8"	3/8"	3/8"	
Pipe run	Length	m	20	20	30	30	30	50	50	50
	Height	m	15	15	15	15	15	30	30	30
Operating limits - cooling mode	min/max	-15°C / +48°C								
Operating limits - heating mode	min/max	-15°C / +24°C								

Nominal cooling capacity based on : - Indoor Air Temp. 27°C DB / 19°C WB - Outdoor Air Temp. 35°C DB

Nominal heating capacity based on : - Indoor Air Temp. 21°C DB - Outdoor Air Temp. 7°C DB/6°C WB

Piping length : 5 m with initial charge

Size 36, 42 and 48: Values for single phase models.

Accessories

Sizes	12	18	24	30	36	42	48	60
Wired control								Optional
Central control								Optional

Cassette Inverter

YGKJZH 12 to 60

A complete range from 3.5 kW to 16.0 kW



Features

- High SEER & SCOP, Class A++ mainly
- Inverter DC compressor and fan motor
- Special low noise fan design
- Washable filter
- Fresh air intake
- Built-in drain pump
- Automatic restart
- Automatic air sweep
- Low Ambient Kit
- Intelligent defrosting
- Different swing angle design for cooling and heating
- Service valve protection cover
- Rustproof casing
- Self diagnosis
- **Blue fin protection (indoor and outdoor units)**



Remote controller

- Wireless
- 5 operation modes (Cool/Heat/Auto/Dry/Fan)
- Sleep mode
- Room temperature setting
- Fan speed selection
- Timer setting function
- Air flow direction setting
- LCD display
- Turbo mode
- Lock button function



Cassette Inverter

YGKJZH 12 to 60



Technical features

Set reference		YGKJZH								
Indoor unit	Sizes	YGKJXH 12	YGKJXH 18	YGKJXH 24	YGKJXH 30	YGKJXH 36	YGKJXH 42	YGKJXH 48	YGKJXH 60	
Outdoor unit	Sizes	YGUJYH 12	YGUJYH 18	YGUJYH 24	YGUJYH 30	YGUJYH 36	YGUJYH 42	YGUJYH 48	YGUJYH 60	
Cooling capacity	kW	3.5 (0.9-3.9)	5.0 (1.6-5.5)	7.0 (2.4-8.5)	8.3 (2.6-9.2)	10.0 (3.2-11.5)	11.0 (3.3-12.0)	14.0 (6.0-14.8)	16.0 (6.5-16.5)	
Heating capacity	kW	3.8 (0.9-4.1)	5.5 (1.4-6.5)	8.0 (2.4-9.5)	9.2 (2.4-9.9)	12.0 (2.9-14.5)	12.5 (3.6-15.0)	16.0 (5.2-18.0)	17.0 (5.2-20.0)	
Compressor	Type	Rotary								
Refrigerant		R410A								
Power supply	V/Ph/Hz	230 / 1 / 50				230/1/50 or 400/3/50			400 / 3 / 50	
Power input	cooling	kW	1.09	1.60	2.18	2.67	3.20	3.90	4.60	5.70
	heating	kW	1.05	1.58	2.21	2.57	3.50	3.80	4.50	4.70
EER			3.21	3.12	3.21	3.11	3.12	2.82	3.04	2.81
SEER			5.6	5.6	6.1	6.1	6.1	5.1	6.1	6.1
COP			3.61	3.48	3.62	3.58	3.43	3.29	3.56	3.62
SCOP			4.0	3.8	4.0	4.0	4.0	4.0	3.8	4.0
Energy Class	cooling		A+	A+	A++	A++	A++	A	A++	A++
	heating		A+	A	A+	A+	A+	A+	A	A+
Indoor airflow (High speed)	m ³ /h		700	760	1 300	1 500	1 860	1 860	2 300	2 400
Sound pressure at 1 m	Indoor (H/M/L)	dB(A)	45 / 41 / 36	46 / 44 / 37	46 / 42 / 38	48 / 45 / 40	49 / 46 / 43	49 / 46 / 43	52 / 47 / 41	53 / 47 / 41
	Outdoor	dB(A)	52	56	57	58	63	61	59	63
Dimensions	Indoor	H (mm)	596	596	840	840	840	840	910	910
		W (mm)	596	596	840	840	840	840	910	910
		D (mm)	240	240	240	320	320	320	290	290
	Outdoor	H (mm)	540	700	790	790	1 100	1 349	1 349	1 365
		W (mm)	848	955	980	980	1 107	958	958	1 085
		D (mm)	320	396	427	427	440	412	412	427
Panel H / W / D	mm	670/670/50	670/670/50	950/950/60	950/950/60	950/950/60	950/950/60	1040/1040/65	1040/1040/65	
Net weight	Indoor unit	kg	20	20	26	31	31	31	43	43
	Panel	kg	5	5	11	11	11	11	12	12
	Outdoor unit	kg	34	47	67	71	92	95	105	126
Piping	Type of connection		Flare							
	Diameter	Gas	3/8"	1/2"	5/8"	5/8"	5/8"	5/8"	5/8"	3/4"
		Liquid	1/4"	1/4"	3/8"	3/8"	3/8"	3/8"	3/8"	3/8"
Pipe run	Length	m	20	20	30	30	30	50	50	50
	Height	m	15	15	15	15	15	30	30	30
Operating limits - cooling mode	min/max	-15°C / +48°C								
Operating limits - heating mode	min/max	-15°C / +24°C								

Nominal cooling capacity based on : - Indoor Air Temp. 27°C DB / 19°C WB - Outdoor Air Temp. 35°C DB

Nominal heating capacity based on : - Indoor Air Temp. 21°C DB - Outdoor Air Temp. 7°C DB/6°C WB

Piping length : 5 m with initial charge

Size 36, 42 and 48: Values for single phase models.

Accessories

Sizes	12	18	24	30	36	42	48	60
Wired control								Optional
Central control								Optional



Blower Inverter

YGEJZH 12 to 60

A complete range from 3.5 kW to 16.0 kW



Features

- High SEER & SCOP, Class A+ or more
- Inverter DC compressor and fan motor
- Washable filter
- Automatic restart
- Condensate pump optional
- Low noise levels
- Wired control
- Low Ambient Kit
- Intelligent defrosting
- Fresh air intake
- Self diagnosis
- **Blue fin protection (indoor and outdoor units)**



Wired control

- 5 operation modes (Cool/Heat/Auto/Dry/Fan)
- Sleep mode
- Room temperature setting
- Fan speed selection
- Timer
- LCD display



Blower Inverter

YGEJZH 12 to 60



Technical features

Set reference		YGEJZH								
Indoor unit	Sizes	YGEJXH 12	YGEJXH 18	YGEJXH 24	YGEJXH 30	YGEJXH 36	YGEJXH 42	YGEJXH 48	YGEJXH 60	
Outdoor unit	Sizes	YGUJYH 12	YGUJYH 18	YGUJYH 24	YGUJYH 30	YGUJYH 36	YGUJYH 42	YGUJYH 48	YGUJYH 60	
Cooling capacity	kW	3.5 (0.9~3.9)	5.0 (1.6~5.8)	7.0 (2.2~8.5)	8.3 (2.4~8.7)	10.0 (3.2~11.5)	11.5 (3.6~12.5)	14.0 (6.0~14.5)	16.0 (6.8~17.5)	
Heating capacity	kW	3.8 (0.9~4.1)	5.6 (1.4~6.8)	8.0 (2.4~9.5)	9.2 (2.4~9.9)	12.0 (2.9~14.5)	13.5 (3.9~15.5)	15.5 (5.2~17.0)	16.5 (5.3~18.8)	
Compressor	Type	Rotary								
Refrigerant		R410A								
Power supply	V/Ph/Hz	230 / 1 / 50				230/1/50 or 400/3/50			400 / 3 / 50	
Power input	cooling	kW	1.17	1.55	2.18	2.67	3.20	4.00	4.70	5.60
	heating	kW	1.05	1.55	2.21	2.57	3.40	3.90	4.40	4.57
EER			3.00	3.23	3.21	3.11	3.12	2.88	2.98	2.86
SEER			5.6	5.6	6.1	6.1	5.6	5.6	6.1	5.6
COP			3.61	3.61	3.62	3.58	3.53	3.46	3.52	3.61
SCOP			4.0	3.8	4.0	4.0	4.0	4.0	3.8	3.8
Energy Class	cooling		A+	A+	A++	A++	A+	A+	A++	A+
	heating		A+	A	A+	A+	A+	A+	A	A
Indoor airflow (High speed)	m ³ /h		750	1 000	1 400	1 400	2 100	2 100	2 400	3 000
External static pressure	Pa		0 / 30	0 / 30	0 / 75	0 / 75	0 / 100	0 / 100	0 / 125	0 / 150
Sound pressure at 1 m	Indoor (H/M/L)	dB(A)	36 / 34 / 28	39 / 36 / 28	46 / 44 / 40	46 / 44 / 40	52 / 48 / 44	52 / 48 / 44	53 / 49 / 45	56 / 54 / 49
	Outdoor	dB(A)	52	56	57	58	63	61	59	63
Dimensions	Indoor	H (mm)	721	721	558	558	775	775	750	750
		W (mm)	1 037	1 037	1 279	1 279	1 226	1 226	1 340	1 340
		D (mm)	266	266	268	268	290	290	350	350
	Outdoor	H (mm)	540	700	790	790	1 100	1 349	1 349	1 365
		W (mm)	848	955	980	980	1 107	958	958	1 085
		D (mm)	320	396	427	427	440	412	412	427
Net weight	Indoor unit	kg	33	33	34	34	46	46	56	57
	Outdoor unit	kg	34	47	67	71	92	95	105	126
Piping	Type of connection		Flare							
	Diameter	Gas	3/8"	1/2"	5/8"	5/8"	5/8"	5/8"	5/8"	3/4"
		Liquid	1/4"	1/4"	3/8"	3/8"	3/8"	3/8"	3/8"	3/8"
Pipe run	Length	m	20	20	30	30	30	50	50	50
	Height	m	15	15	15	15	15	30	30	30
Operating limits - cooling mode	min/max	-15°C / +48°C								
Operating limits - heating mode	min/max	-15°C / +24°C								

Nominal cooling capacity based on : - Indoor Air Temp. 27°C DB / 19°C WB - Outdoor Air Temp. 35°C DB

Nominal heating capacity based on : - Indoor Air Temp. 21°C DB - Outdoor Air Temp. 7°C DB/6°C WB

Piping length : 5 m with initial charge

Size 36, 42 and 48: Values for single phase models.

Accessories

Sizes	12	18	24	30	36	42	48	60
Condensate pump								Optional
Central control								Optional

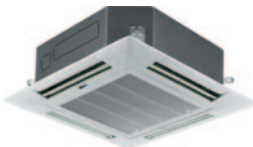


VRF Systems

YV2VYH • R410A

VRF System High Efficiency

YV2VYH 025 to 204
Cooling capacities 25.4 kW to 211.2 kW



VRF System

- Capacities from 25.4 to 211.2 kW
- Operating range of nominal power (10% - 130 %)
- DC Inverter Scroll Compressor
- Low noise levels
- High Efficiency. EER up to 4.29
- Modular design
- Long piping design up to 1000 m
- Big height gap design: 90 m
- Gap between indoors: 18 m
- Large indoor unit combinations
- Flexible and quickly installation

Comfort – Quality

- Cooling and heating
- Connection up to 64 indoor units per refrigeration circuit (3 outdoor units)
- Complete range in R410A
- Reduced space of ground
- Is appropriate particularly for existing buildings
- Cooling to -5°C to +43°C (outdoor temperature)
- Heating to -15°C to +24°C (outdoor temperature)



YV2VYH Technical features - Single module outdoor unit

Model	YV2VYH025	YV2VYH028	YV2VYH033	YV2VYH040	YV2VYH045	YV2VYH050	YV2VYH056	YV2VYH061	YV2VYH068	
Cooling capacity	kW	25.4	28.9	34.8	41.5	46.4	51.5	57.8	63.7	70.4
EER		4.29	4.00	3.90	3.55	3.47	3.42	3.34	3.18	3.09
Heating capacity	kW	28.1	32.4	37.9	45.8	51.1	57.2	63.7	70.1	73.9
COP		4.30	4.19	3.71	3.84	3.82	3.74	3.75	3.73	3.83
Air flow in cooling	m ³ /h	15 000	15 000	15 000	15 000	15 600	16 200	16 200	16 200	16 200
Sound Pressure Level at 1 m	dB(A)	57	57	59	59,5	61	62	62	62	63
Electrical features										
Power supply		380V-3-50/60Hz								
Power input "cooling"	kW	5.87	7.00	8.60	11.27	12.97	14.73	16.79	19.37	21.98
Power input "heating"	kW	6.28	7.52	10.12	11.73	13.10	15.12	16.79	18.48	19.08
Compressor	Type	DC Inverter Scroll				2 x DC Inverter Scroll				
Dimensions and Weight										
Height x Width x Length	mm	1690x1350x720	1690x1350x720	1690x1350x720	1690x1350x720	1690x1350x720	2048x1350x720	2048x1350x720	2048x1350x720	2048x1350x720
Weight	kg	278	278	278	282	324	343	343	369	369
Piping connections										
Gas		1"	1"	1"	1" 1/4"	1" 1/4"	1" 1/4"	1" 1/4"	1" 1/4"	1" 1/4"
Liquid		1/2"	1/2"	1/2"	1/2"	1/2"	1/2"	1/2"	1/2"	1/2"
Refrigerant charge	Type	R410A								
	kg	10	10	10	10	10	10	10	10	10
Piping length / Height difference										
Max. piping length	m	190								
Max. height difference	m	50								
Max. number of indoor units		13	16	20	24	27	30	33	36	40

Models available to be confirmed as soon as they are launched (estimated Mar'15)

Combination of modular outdoor units

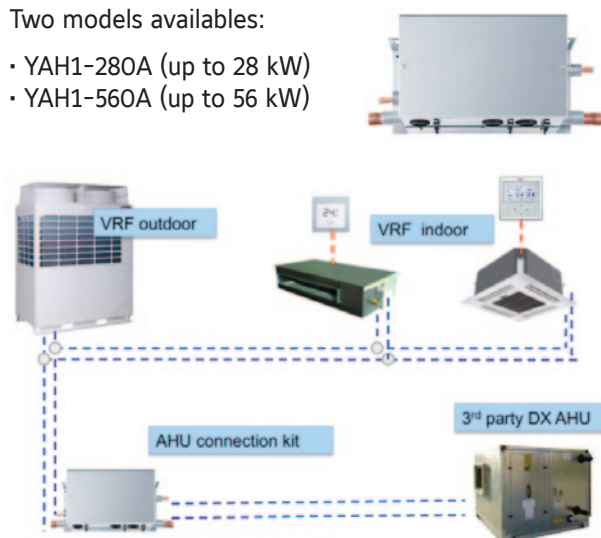
Model	074	080	085	090	095	101	106	112	118	124	130	136	141	146	151	157	162	168	174	180	186	192	198	204
Capacity Cooling kW	76.3	83.0	87.9	93.0	97.9	104.2	109.3	115.6	121.5	128.2	140.0	140.8	144.5	150.6	155.7	162.0	167.1	173.4	179.3	186.0	191.9	198.6	204.5	211.2
Capacity Heating kW	83.7	91.6	96.9	103.0	108.3	114.8	120.9	127.4	133.8	137.6	144.0	147.8	160.2	165.9	172.0	178.5	184.6	191.1	197.5	201.3	207.7	211.5	217.9	221.7
Maximum indoor units	43	46	50	53	57	60	64	64	64	64	64	64	64	64	64	64	64	64	64	64	64	64	64	64
Appearance																								

DX-Kit

York offers a range of connection kit to connect VRF outdoor units to third party DX air handling units.

Two models availables:

- YAH1-280A (up to 28 kW)
- YAH1-560A (up to 56 kW)



YCZ-G001 Central Controller

- Max. 32 indoor units control.
- Max. 32 outdoor units control.
- On/Off, Mode, Fan speed, Temperature setting, Swing.
- Individual control, Group control & Central control (Max. 32 indoor units)
- Color interface with back light
- Large touch key
- Fahrenheit/Celsius selectable
- Weekly timer
- Unit name & Group name free setting. Four background available (mall, hotel, office, home)
- Error display
- Together with one IGU05 per outdoor unit



About Johnson Controls

Johnson Controls delivers products, services and solutions that increase energy efficiency and lower operating costs in buildings for more than one million customers.

Operating from 500 branch offices in more than 150 countries, the company is a leading provider of equipment, controls and services for heating, ventilating, air-conditioning, refrigeration and security systems. Johnson Controls is involved in more than 500 renewable energy projects including solar, wind and geothermal technologies.

Its solutions have reduced carbon dioxide emissions by 13.6 million metric tons and generated savings of \$7.5 billion since 2000. Many of the world's largest companies rely on Johnson Controls to manage 1.5 billion square feet of their commercial real estate.

